



matchpoint
the finishing experts

diamondTec

high performance

sueding machine



diamondTec

high performance sueding machine

matchpoint develop diamondTec based on the great experience in textile diamond finishing and knowhow in textile machinery.

diamondTec emerising machine create a perfect and smoothest sueding effect.

The horizontal roller system is the best system to control fabric tension, one of the most important points for the emerising process of textiles.

The emerising roller speed and roller direction can be programmed multi flexible up to 2.500rpm.

The technical speed can increase up to 50m/min.

According customers requirements the machine can be equipped with cylinder rollers or innovative slat rollers. matchpoint consult you to find the correct technical configuration for your demands.

diamondTec meets diamondpeach® – suits for woven and stable knit applications.

Apparel Fabrics :

bottom wear, shirting, sportswear, DENIM

Home Textiles :

furniture fabrics, bedsheets, bed covers, curtains, artificial leather (Polyester Microfibre)

Automotive :

warp knitted, artificial leather, natural leather

Materials :

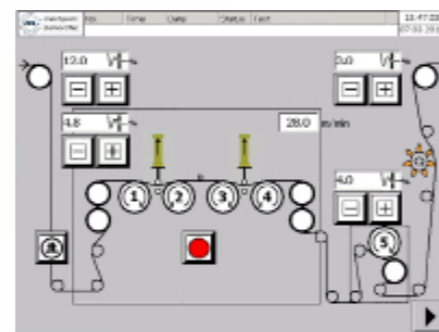
Cotton, Cotton blends, Wool, Viscose, Cupro , Tencel, Lyocell, Rayon, Polyester, Polyamide, Polynosic, Mono- and Triacetat, Aramide, Polyolefine , Microfibre and staple fibre



Slat roller



Cylinder roller



diamondTec

meets diamondpeach®

diamondTec set new standards in diamond finishing. The combination of diamondTec and diamondpeach® is the high-tech solution in surface apparel finishing.

diamondTec – benefits and technical details :

- High performance emerising machine
- Emery roller speed up to 2.500 rpm / each
- Technical speed up to 50m/min
- Most efficient slat roller system
- Up to 100.000 diamond bpm
- Individual emerising roller direction
- Tension control by double transport rollers
- Easy machine handling for operator
- Quick change of emerising process and parameters

diamondpeach® plus – The leading diamond emery for sueding of textiles

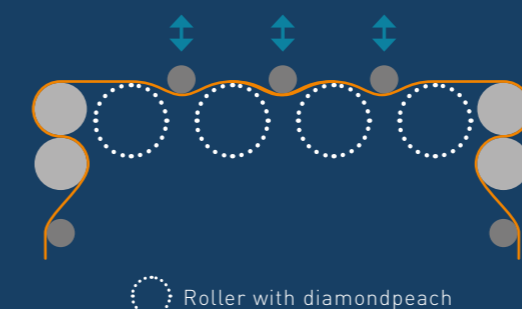
- Up to 8 million meter at diamondTec machine
- JOINTFREE – technology
- Highest productivity
- Best pre-treatment
- Improved fabric strength
- Best diamond dot stability
- Increased machine efficiency

German engineering and manufacturing



Slat roller with diamondpeach®

diamondTec EMERISING MACHINE



diamondpeach meets diamondTec:

matchpoint supply worldwide the following diamond emery qualities:
grain sizes : 80 / 150 / 220 / 320 / 400 / 600

Available in diverse tape widths:
50 mm | 75 mm | 100 mm | 150 mm | 300 mm

Tape length:
According to your specific machinery needs



diamondTec

high performance sueding machine

Basic configuration of diamondTec sueding machine

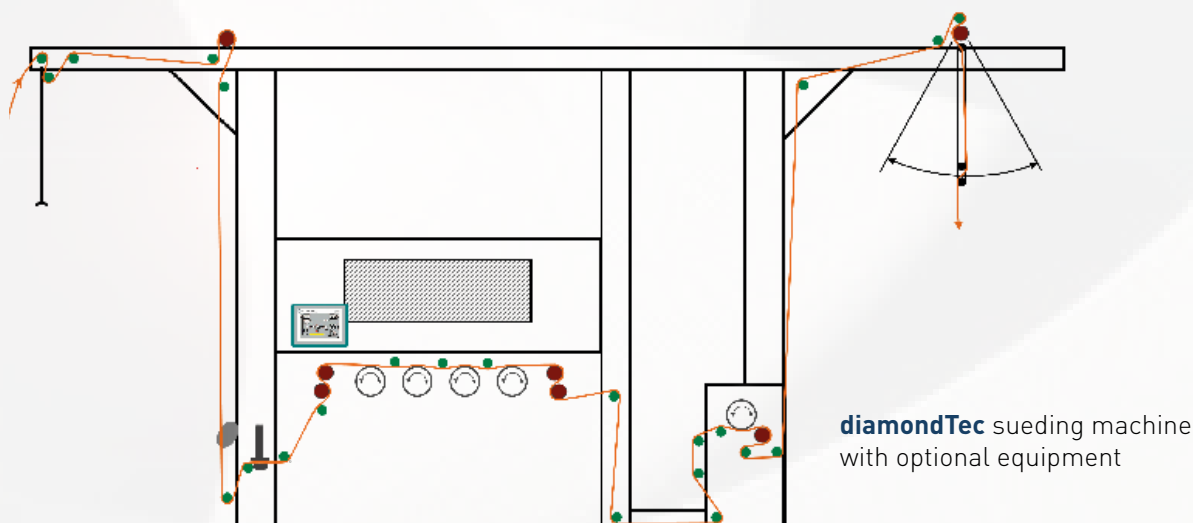
- 4 cylinder rollers
- Double draw rollers for tension control
- Rotary tensioner in inlet
- Seam detection
- Plaiting unit
- 10" touch screen control panel
- Suction unit

Optional equipment

- Slat roller system inclusive noise protection
- Smoothing spindle inlet for elastic fabrics
- Cloth guiding system
- Additional draw rollers for inlet or outlet
- Load cell for tension control
- Motorised winder / unwinder
- Tension compensator / dancing roller
- Antistatic device
- Climatisation
- "Schmirgelfranz" special paint

Further option : diamondpeach® emery

Available grain sizes : 80 / 150 / 220 / 320 / 400 / 600



Technical data :

Fabric width	1600-2200 mm	Compressed air	120 NI/min.
Roller width	1800-2400 mm	Noise level average	Below 78 dB(A)
Technical speed	5-50 m/min	Temperature environment	5-50°C
Roller speed	N = 950 - 2300 rpm	Humidity	<85%
Electric load	30-45 KW	Altitude	<500 m
	3 phase 400 V / 50 Hz		



matchpoint
the finishing experts

matchpoint Textilmaschinenbau Deutschland GmbH

Krefelder Str. 110
41063 Moenchengladbach
Germany

Fon 0049 - 2161 - 604453
Fax 0049 - 2161 - 604453
Cell 0049 - 170 - 5930326

info@matchpoint-textile.com
www.matchpoint-textile.com



Have a look at our webpage for the agent of your country!